

SOCIETY HILL

# Reporter

March/April 2019

The Newsletter  
of The Society Hill  
Civic Association

[www.societyhillcivic.org](http://www.societyhillcivic.org)

## Q&A Forum



U.S. Congressman  
Dwight Evans

The Society Hill Civic Association (SHCA) invites all neighbors to the March 20 General Membership Meeting. We will host a question and answer forum with United States Congressman Dwight Evans, who has served as a member of the United States House of Representatives from Pennsylvania's 3rd congressional district since 2016.

Congressman Evans grew up in the Germantown and West Oak Lane sections of Philadelphia and is a graduate of the Community College of Philadelphia and La Salle University. After graduation, he became a teacher in the School District of Philadelphia and a community activist for the Urban League. He is currently a member of the Congressional Progressive Caucus and the Congressional Black Caucus.

In addition, Hosts for Hospitals Outreach Coordinator Cathy Davis will share information about this local non-profit agency that offers lodging and support at volunteer host homes. Neighbors Dick and Margaret Ullman will speak about their personal experience with the program.

Everyone is welcome to attend. Simply arrive at Pennsylvania Hospital's Zubrow Auditorium, located on the first floor inside the main entrance at 8th Street near Spruce, before 7:30 p.m. Light refreshments will be available.

## Seeking Nominations for Directors and Officers

Our community continuously benefits from the input and hard work of residents who appreciate living in one of the nation's premier neighborhoods. We invite you to volunteer for a position on the SHCA Board of Directors and Officers. Join a team of dedicated and hard-working neighbors who embrace SHCA's mission (see Page 2) and labor on behalf of more than 5,000 residents and 3,000 households.

This year's elections will take place at our May 15 General Membership Meeting. Members will elect a president, two vice presidents, a secretary, a treasurer and up to eight directors at large, all for one-year terms. Also, four of the 12 quadrant directors will finish their three-year terms and need to be replaced.

SHCA's Nominating and Election Committee proposes individuals for these positions. Others may be nominated by petition. To nominate yourself or a neighbor, submit a petition signed *continued on Page 7*

Wednesday,  
March  
**20**

### MARK YOUR CALENDAR

Society Hill Civic Association Meeting  
Wednesday, March 20, 2019

**Pennsylvania Hospital  
8th & Spruce Streets**

**5:45 p.m. Board Meeting**  
Pennsylvania Hospital's Great Court Room

**7:30 - 9 p.m. General Membership Meeting**  
Pennsylvania Hospital's Zubrow Auditorium

**Speakers & Topics:** U.S. Congressman Dwight Evans; Q&A forum  
Hosts for Hospitals Outreach Coordinator  
Cathy Davis; an overview of the agency

### THE NEIGHS HAVE IT



Hold your horses, spring is right around the corner!  
photo by Bonnie Halda

# In This Issue...

**Page 5**  
Save the Date:  
Open House Tour



**Page 7**  
Keeping Posted:  
Curtis Publishing Company



**Page 9**  
Make a Difference:  
Staving Off Hunger



**Page 11**  
Stepping Back in Time:  
Trouble on Society's Hill



**Page 14**  
On the Go:  
At Home in Kenya



**Page 18**  
South Street Headhouse  
District: A Sweet Addition  
to South 5th Street



**Page 25**  
Headhouse Farmers' Market:  
Early Spring Recipes



**Page 27**  
Our Creatures Great & Small:  
A Paris Adventure



**Page 30**  
Nifty Neighbors in My Backyard:  
Richard De Wyngaert



SOCIETY HILL

*Reporter*

**NUSA  
Award-Winning  
Newsletter  
2014 thru  
2018**

**Editor in Chief**  
Sandra Rothman

**Columnists**  
Marilyn Appel  
Jane Biberman  
Claudia Carabelli  
Al Cavallari  
Matt DeJulio  
Mike Harris  
Martha Levine  
Rosanne Loesch  
Sandra Rothman  
Richard De Wyngaert

**Contributors**  
Claire Batten,  
Karina Clough,  
Fred Moore, Keri White,  
Vivienne Woodward

**Graphic Design**  
judy@parallel-design.com

**Press Release Liaison**  
c/o Matt DeJulio  
mattdejulio@aol.com

**Advertising Manager**  
William Jantsch  
wmjantsch@hotmail.com

**Submission Deadline**  
May/June Issue: April 1

**Society Hill Civic Association**  
P. O. Box 63503  
Philadelphia, PA 19147  
Tel. 215-629-1288

**Website**  
Find past issues in color  
at [www.societyhillcivic.org](http://www.societyhillcivic.org).

The views set forth in the opinion articles are the views of the authors and are not necessarily those of SHCA.

**Submissions**

If you have news that would be of interest to Society Hillers, email Sandra Rothman at [sandra.rothman@aol.com](mailto:sandra.rothman@aol.com). Materials must be submitted in writing and include the name of a contact person. Edited submissions will be considered for publication if space permits. Letters to the Editor must be signed, with contact information.

**SHCA Mission Statement**

The aims and purposes of SHCA are: to promote the improvement of the Society Hill area of Philadelphia, including its cultural, educational and civic activities, and the preservation and restoration of its historic buildings; to represent the residents of Society Hill in matters affecting the City of Philadelphia generally and Society Hill in particular; and to interpret the value and significance of Society Hill to the public.

## SHCA BOARD OFFICERS & DIRECTORS

**President**  
Rosanne Loesch

**First Vice President**  
Martha Levine

**Second Vice President**  
Mary Purcell

**Treasurer**  
Woody Rosenbach

**Recording Secretary**  
Camille Orman

**Directors at Large**  
Claudia Carabelli, Bill Jantsch,  
George Kelley, Robert Kramer,  
Madeline Miller, Ben Speciale,  
Mary Tracy, Lisa Unger

**Quadrant Directors**  
Northeast: Lorna Katz, Dave Rucki, Brian Wengenroth  
Northwest: Amy DeMarco, Wendy Glazer, Sissie Lipton

Southeast: Jeff Berry,  
Joe Dillon, Barbara Gelman  
Southwest: Susan Collins,  
Larry Spector, Kim Williams

**Continuing Director**  
Bob Curley

**Condominium Representatives**  
Hopkinson House:  
Concha Alborg  
Independence Place:  
Jerry Yablin  
Penn's Landing Condos:  
Loretta Burton  
Society Hill Towers:  
Terry Conn  
St. James Court:  
Sharon Simon  
The St. James:  
Norm Liberman

## PRESIDENT'S MESSAGE

BY ROSANNE LOESCH

## Outgoing Reflections

It has been my privilege to be your president for these past three years. A new president will take over as of June 1 after the membership votes at the General Membership Meeting mid-May. As I near the end of my last term, I am reflecting on the priorities I see for this neighborhood.

My biggest concern for Society Hill is that our city government has lost sight of the value and importance of preserving the scale and context of this historic neighborhood.

We are fortunate that the properties in much of Society Hill are subject to the oversight of the Historic Commission for repairs, alterations and any proposal for demolition of all or part of a structure. But where new buildings can be built, the scale (height and mass) is controlled largely by zoning, and, on that point, the City has failed to understand the height and mass appropriate to the original, historic plan for Society Hill.

One of the most important aspects of preserving the history of this neighborhood's architecture is also preserving the low-rise scale surrounding its 18th- and 19th-century housing stock. Although it should be noted that SHCA has supported new development where appropriate. Prominent examples include our support for the St. James Tower at 8th and Walnut, the new highrise at 500 Walnut Street and the Toll Brothers condo at New Market.

Most of us are aware that part of Ed Bacon's Redevelopment Plan of the last century added carefully positioned highrises in very specific areas: I.M. Pei's three iconic towers along Front Street, and Independence Place and the Hopkinson House on Washington Square. The goal was to bring the needed density to attract the young pioneers of the era to live here and also to attract them to the possibility of buying and restoring the badly deteriorated, but still standing, 18th- and 19th-century housing. The plan was wildly successful, thereby transforming Society Hill

into the first example, nationally, of an urban renewal plan based on historic preservation. It must also be noted that there were serious drawbacks to the plan, notably the displacement of marginalized people from this part of town.

Fast forward to today, the sweat equity of all the stakeholders of that period is being mined and exploited — with the help of an overly permissive zoning code — by developers eager to cash in on what has now become an extremely attractive and marketable environment. Of course, developers are only doing what market forces dictate, and often what they are legally entitled to do, although some push the envelope even further. What is most troublesome is that today's city planners do not seem to value or attempt to preserve this beautifully scaled piece of Philadelphia history through the assignment of appropriate zoning.

Is this being driven by the temptation of extra tax dollars, even though, inexplicably, new construction gets the controversial 10-year tax abatement, or the pressures exerted by the development community? Philadelphia has more historically important, but, very sadly, un-inventoried, building stock than any other city in America. More importantly, it has swaths of intact neighborhoods that reflect the unique scale intrinsically bound to the architecture of these historic buildings.

Society Hill is the most notable example a successful preservation effort of an entire neighborhood, but it should not be the last. The historic scale and context of Society Hill should not be lost through inappropriate development driven by profit and not planning. We need to continue to urge our city to do better.

**Rosanne Loesch** is an attorney and former president of SHCA. She, her husband and two children have lived in a historic house on Spruce Street since 2002 and, before that, lived for 14 years in the Washington Square West neighborhood.



**Rosanne Loesch,**  
SHCA President

*Society Hill is the most notable example of a successful preservation effort of an entire neighborhood, but it should not be the last.*

### Incentives to Keep Society Hill Safe and Green

**S**HCA offers all neighbors substantial subsidies to encourage keeping our community beautiful and safe, with added discounts to members.

**Plant a Tree** SHCA offers property owners 50 percent of the cost of removing and replanting a tree, up to \$500 for SHCA members and up to \$400 for nonmembers.

**Prune or Remove a Tree** SHCA will reimburse a property owner up to 50 percent of the cost to hire professional

services to prune their street tree, up to \$300 for SHCA members and \$200 for nonmembers, no more often than every two years.

**Fix Your Bricks** "Fix the Brix" provides an incentive for homeowners to make sidewalks safe for pedestrians: a subsidy of 40 percent of the total invoice for the leveling of their sidewalks, brick or cement. Current SHCA members receive up to \$400; nonmembers receive up to \$300. See Page 21 for details.

# McFarland's Value Proposition

## Experienced and Educated

Since 1958, McFarland Tree, Landscape and Hardscape Services has provided arboricultural service throughout Greater Philadelphia. Our comprehensive experience is augmented with continuing education and researched understanding of the practices of modern arboriculture along with our past experience. Staffed with a Board Certified Master Arborist and Certified Arborists, McFarland stays informed about current conditions and issues affecting your trees, shrubs and ornamentals.

## Service

We answer the phone when you call during business hours. Now, that's different! We are in constant contact with our arborists and field personnel to provide timely responses to your needs. A knowledgeable arborist will visit with you to discuss your needs and concerns. Seasoned veterans with well-maintained tools and equipment will perform the agreed-upon services to your satisfaction.

## Quality

Our recommendations are based on observations and a consultative approach that identifies your needs and expectations, tempered with our concern to maintain and improve the health, appearance and safety of your landscape. Custom pruning achieves the landscape appearance you desire while being performed to the specifications of proper arboricultural practices. Plant Health Care services include a thorough inspection before any

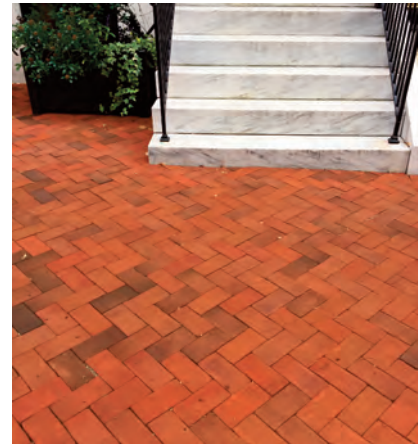
treatment so that we apply materials only when and where they are needed. Landscape projects are meticulously executed and guaranteed.

## Distinctive

McFarland Blue trucks, uniformed personnel, attention to detail and thorough clean-up of your property help differentiate McFarland. Our management of your landscape can be total or selective, depending on your needs and budget. If we cannot immediately identify the cause of a landscape problem, we will research the issue until we have solid answers to report to you. As a second-generation business, we have been satisfying our clients with a lifelong-relationship approach to service.

## Fix Your Bricks

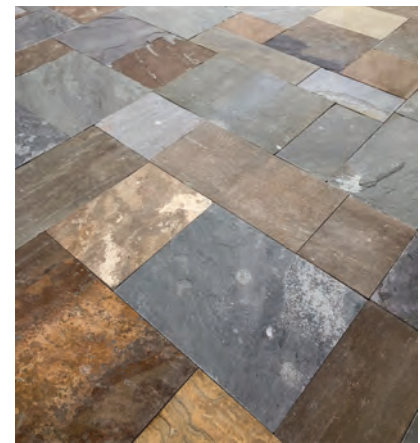
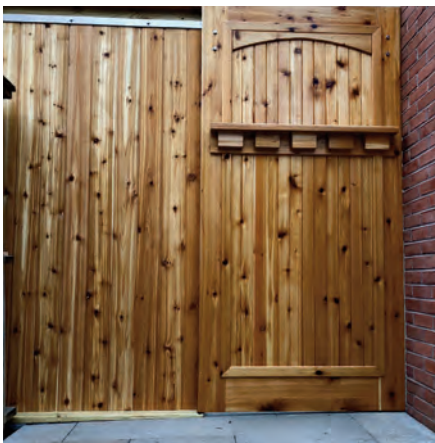
Brick sidewalks in Society Hill and downtown Philly are being renovated to provide a smooth, safe walking surface for pedestrians. We have experience and have repaired many sidewalks and patios in the city. The upheaval caused by tree roots can often be carefully corrected without removing or killing trees. Call McFarland to inquire about fixing your bricks.



**McFARLAND**  
Tree, Landscape, Hardscape  
& Construction Services

215-844-TREE

[www.mcfarlandtree.com](http://www.mcfarlandtree.com)



## SAVE THE DATE

## 41st Society Hill Open House and Garden Tour, Sunday, May 19

Come and support SHCA's only annual fundraiser, one that attracts repeat visitors from all over the tri-state area.

Tickets can be purchased in advance for \$35 each or at the door for \$40 each. Student rate is \$20 with school ID.

### Information and ticket purchase options:

Phone: Matt deJulio 215-629-1288

Email: mattdejulio@aol.com

Website: [www.societyhillcivic.org](http://www.societyhillcivic.org), click on "Open House Tour." Checks, Visa, and MC accepted.

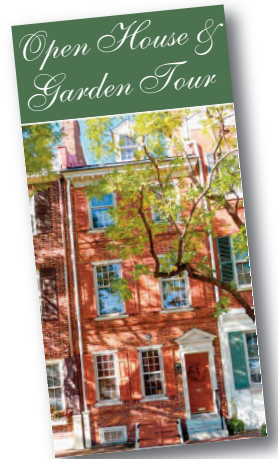
**The Tour is a fundraiser with proceeds directed towards neighborhood improvement**

**projects. It's a collaborative neighborhood effort! Your help is needed in two ways:**

**Interesting houses:** We show houses of all sizes and styles. If you have suggestions for houses for the tour, please contact co-chair Martha Levine at [marthalev6@gmail.com](mailto:marthalev6@gmail.com) or 215-629-0727.

**Volunteers:** We need volunteers. Opportunities include house and garden hosting and greeting visitors the day of the tour. All volunteers receive a complimentary tour ticket. Contact co-chair Linda Skale at [lcskale@gmail.com](mailto:lcskale@gmail.com) or 215-238-1040.

Hope to see you there to support SHCA!



## UPDATE ON 1 DOCK STREET TOWER

## Residential Tower Proposal

### Hearing on the Zoning Permit Appeal

As many Society Hill residents are aware, two slightly different zoning permits for a new 31-story residential tower were issued by the City of Philadelphia's Department of Licenses and Inspections in August and December of 2018. The tower would be built on the small parcel at the southern end of the Society Hill Sheraton Hotel site that is bordered by Walnut, Dock and Front Streets. SHCA appealed both permits to the Zoning Board of Adjustment (ZBA) for failure to comply with the Zoning Code in all respects. The Society Hill Towers similarly appealed both permits.

The developer for the tower, LCOR (with projects in New York City, Washington, D.C. and Philadelphia), abandoned the first permit in January. The appeals of the second permit were heard by the ZBA on February 5. At the end of an almost two-hour hearing, ZBA denied both appeals and upheld the issuance of the permit. While ZBA decisions may be appealed to the Court of Common Pleas, SHCA has not yet decided whether to do so.

### Report on the Civic Design Review Meeting

On another front, because of the proposed size of 1 Dock Street, its design is subject to the City's Civic Design Review (CDR) process, in which the developer first presents to the community. That occurred on January 17, at which the project

architects (Philadelphia-based BLT Architects) fielded over an hour's worth of questions and comments. Prior to the CDR meeting on February 5th, SHCA submitted comments to the CDR panel.

SHCA's comments can be found at [www.societyhillcivic.org](http://www.societyhillcivic.org). The CDR panel heard various opinions about the design, some strongly in favor — for instance, from the Planning Commission — and others very critical of the design. The CDR panel requested the developer to consider the comments and come back for a second CDR meeting along with a traffic study. However, please note that the CDR process is only advisory, and the developer is not compelled to follow any recommendations of the panel. SHCA will keep the community advised of future developments on this project.



**BLT Architects rendering of proposed 31-story residential tower at 1 Dock Street.**

### EXERCISE & SOCIALIZE

The **Walkie/Talkies** meet at Three Bears Park, Delancey Street between 3rd and 4th Streets, on Tuesday and Thursday mornings at 8:15 a.m. for a one-hour stroll through our historic community. Anyone is welcome to participate in this non-stressful, one-hour exercise and socialize program.

**"Philly Is Walking In The Park!"** meets at the fountain in the center of Washington Square, 6th and Locust Streets, at 8 a.m. Mondays, Wednesdays and Fridays for a half-hour, self-paced walk through our historic, beautiful park led by neighbor Dr. Lisa Unger. All are invited to join us.



**parallel.**  
*design*

Find our designs online.

**BeyondTheLibertyBell.org**  
**Parallel-Design.com**  
**SusieMeissner.com**  
215-476-4040

Logos  
Websites  
Banners  
Books  
Brochures  
Invitations

Newsletters  
The Award-Winning  
Society Hill  
*Reporter!*



**Philadelphia Gardens, Inc.**

URBAN GARDEN DESIGN + INSTALLATION  
+ CONTAINER GARDENS by Toni Ann Flanigan  
215.951.9193 // [www.philadelphiagardens.com](http://www.philadelphiagardens.com)



**HOME**  
**INSPIRED**

**Builders/ Remodelers**

Classic  
Contemporary  
Historic

**ORION** ★ ★ ★

[www.oriongc.com](http://www.oriongc.com) 610-649-4545

2017 Award Winner - Preservation Alliance of Greater Philadelphia PA 5533

## KEEPING POSTED

BY AL CAVALARI

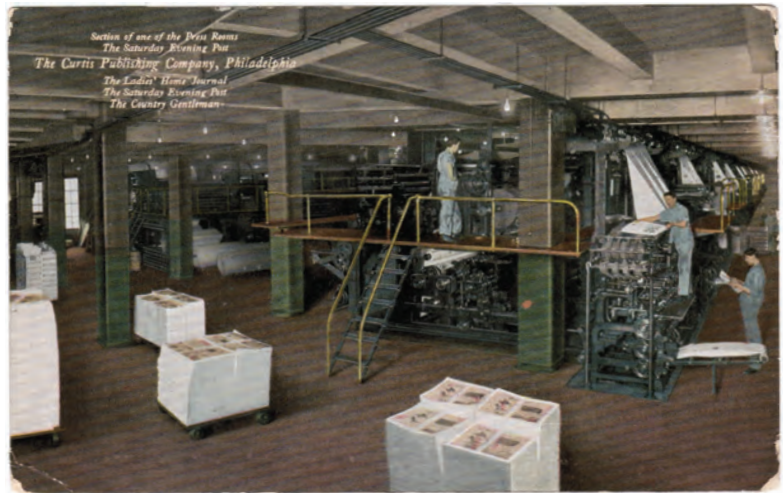
## The Curtis Publishing Company

Did you know we had a manufacturing plant right on Washington Square? We might think of the Curtis Publishing Company's headquarters as an office building, but it was also a giant factory. The company published *The Saturday Evening Post*, *Ladies Home Journal* and other magazines there. Many floors were devoted to the printing process, binding, cutting, warehousing giant rolls of paper and then shipping millions of finished magazines. The interior view card shows a section of one of the pressrooms. It is one in a series of some dozen post cards that show the company's entire range of operations going on across the street from Washington Square Park. Both cards were published after 1906.

Every aspect of magazine production existed there. Other cards show executive offices, great halls full of clerks in the subscription departments and editorial offices, as well as the shipping department, paper warehouse and board room. It was all under one roof.

Founded in 1891 by publisher Cyrus H. K. Curtis, the company survived into the 1960s, when it sold its headquarters and various magazine titles before slipping away into insolvency and history. *The Saturday Evening Post* was revived in 1976 by another company.

**Al Cavalari** is a certified member of the Association of Philadelphia Tour Guides. For a day job, he operates the Flag Guys®, a flag business in upstate New York. Send comments to Al at [flagguys@aol.com](mailto:flagguys@aol.com).



This postcard shows a pressroom at Curtis Publishing Company.



A view of Curtis Publishing Company with Independence Hall in the foreground.

## Nominations for Directors & Officers

*continued from Page 1*

by 10 SHCA members. Nomination for quadrant director requires the signatures of 10 residents of that quadrant. The committee appreciates information about the nominee.

Those being recommended for a position must live within the boundaries of Society Hill, be at least 21 years of age and be a member of SHCA. Visit [www.societyhillcivic.org](http://www.societyhillcivic.org) for more information about our civic association, its board and nominating process. Submissions must be received by March 30 in order to be considered.

Nominations will be listed in the next issue of the *Reporter*. Send to SHCA Administrator Matt DeJulio at [mattdejulio@aol.com](mailto:mattdejulio@aol.com).



**Our sincere condolences to the friends and family of Denise Floyd Walker, who passed away on Saturday, January 26. Denise was a constant presence in our community for nearly three decades, as she performed her duties as crossing guard for the students of St. Peter's School.**



**ADORNAMENTI**

1106 Pine Street  
215.922.2722

**Collection  
of  
Art-To-Wear Jewelry**


**SHOW OF HANDS**

1006 Pine Street  
215-592-4010

**Collection  
of  
Mid-Century Murano Glass  
and  
Contemporary Crafts**



We contribute to Welcome Basket.  
We are located on Historic Antique Row.



**Looking for the Calm of Spirit?**

*Our Church invites the community to join us  
for spiritual growth through:*

**Sunday & Wednesday Services**  
Sunday School for Children • Reading Room  
**Sunday Service:** 11AM • **Wednesday Evening Meeting:** 7:30PM  
**Reading Room Hours:** Monday: 11AM to 1:30PM,  
Wednesday: 2PM to 7PM  
Thursday and Friday: 11AM to 4PM Saturday: 11AM to 1:30PM

**FIRST CHURCH OF CHRIST, SCIENTIST, PHILADELPHIA**  
*...Supporting healing for all mankind*

225 Chestnut Street, Philadelphia, PA 19106  
**215-922-0828**  
visit us at: [firstchurchcsp Phila.org](http://firstchurchcsp Phila.org)


*The* **CENTER  
for GROWTH**

psychological counseling • therapy • support groups

**Achieve Greater Joy  
Deepen Intimate Relationships  
Get More Satisfaction Out of Life**

- Individual Counseling
- Couples Therapy
- Sex Therapy
- Imago Counseling
- Support Groups

**Call For Appointment  
(267) 324-9564**



Present this ad at your 1<sup>st</sup> session & your 2<sup>nd</sup> session is **FREE.**

233 S. 6th Street, Suite C33, Philadelphia, PA 19106  
[www.therapyinphiladelphia.com](http://www.therapyinphiladelphia.com)

**ST. PETER'S SCHOOL**  
PRESCHOOL (AGE 3) THROUGH EIGHTH GRADE

**INDEPENDENT    NON-SECTARIAN    COEDUCATIONAL**



**COME VISIT US!**

319 Lombard Street  
215.925.3963    [st-peters-school.org](http://st-peters-school.org)



## MAKE A DIFFERENCE

BY CLAUDIA CARABELLI

## Staving Off Hunger in Our City

“I’m starving!” How often have you found yourself uttering those words? Are you really starving? Probably not, since for most of us it means we’re late for a meal or trying to diet. It’s seldom due to lack of access. Yet for a surprisingly large number of our fellow citizens, it’s a sad reality. Food insecurity affects one in eight Pennsylvanians — a staggering number for the richest country in the world. Philadelphia, as the poorest large city in the nation, has its own hunger needs that are urgent and ongoing.

The Greater Philadelphia **Coalition Against Hunger** has been a leader in the battle to end hunger for over two decades. Founded in 1996, they “strive to build a community where all people have the food they need to lead healthy lives.” They do so with a three-pronged approach.

**Immediate Relief** provides hands-on support for food pantries and soup kitchens. Through a partnership with several area markets, they receive donated food each Wednesday and distribute it to 10 food pantries in the city — 200,000 pounds of food since 2002! These pantries are chosen because of the need in their communities, an agreement to stay open for an additional day and the ability to safely transport the food donation from pick-up site to pantry. This ensures that perishables are distributed quickly, and people have access to healthy options.

Their First Responders Program teams up veteran pantry coordinators with those who need done-on-one mentoring. These efforts have been successful in increasing the sustainability of the small, mostly volunteer-run pantries upon which many neighborhoods depend.

To ensure that people in crisis can connect quickly with pantries and soup kitchens, the Coalition operates the region’s Food Pantry Map on their website. This provides mobile-friendly access to emergency food along with referrals and bilingual hotline support.

**Short-Term Relief** includes helping nearly 5,000 people apply for benefits annually. Staff participate in over 100 community outreach events each year, connecting individuals and families with needed food and resources; it’s hard to keep perishables if you don’t have electricity or refrigeration. They educate those in need about how to access SNAP (Supplemental Nutrition Assistance Program, formerly called food stamps). You may not know but

despite propaganda to the contrary, most people rely on SNAP for an average of only nine months.

To combat childhood hunger, The Coalition is a lead partner in efforts to increase the number of schools offering breakfast to their students. Access to meals while in school is a priority, but many young people struggle during their summer break. The Coalition’s Summer Meals Campaign works to ensure that kids have access to free meals during those months. Unfortunately, only about half of the eligible children utilize the over 1,000 community sites for free meals when school is out. Similar to SNAP supports, they have a Summer Meals Hotline and Summer Meals Map on their website to offer assistance.

**Long-term systemic change** is made through the Coalition’s advocacy efforts. They center on educating elected officials about issues related to hunger in their districts and its effect on their constituents. They work to protect state and federal benefits programs that people rely upon to feed their families, ensuring that the benefits are administered effectively. The Coalition understands the tremendous value, limitations and overall need for better utilization of nutrition programs. They are able to perform data analysis of SNAP, school meals and summer meals to identify gaps and trends that prove useful for both the public and policy makers to understand.

#### Three Things You Can Do to Fight Hunger:

- Donate to a food drive.
- Make a monetary contribution.
- Register to walk for a food pantry, soup kitchen or anti-hunger organization.

**Claudia Carabelli** serves SHCA as a director at large.



#### Questions?

##### Want to get involved?

Phone: 215-430-0555  
 SNAP Hotline: 215-430-0556  
 Fax: 215-769-2765  
 Facebook: @hungercoalition  
 Twitter: @GPCAHunger  
 Instagram: @philahungercoalition

**Laura Wall, Executive Director**  
 lwall@hungercoalition.org  
 215-430-0555, Ext 100

**Alyssa Bradley, Advocacy and Communications Associate**  
 abradley@hungercoalition.org  
 215-430-0555, Ext 110



**23rd annual Walk Against Hunger**  
 Saturday, April 27, at Lincoln Financial Field

This fun-filled family event helps thousands of people in southeast Pennsylvania and South Jersey put food on their tables. Register at [www.hungercoalition.org/hungerwalk](http://www.hungercoalition.org/hungerwalk).

# BELL CLEANERS

@Society Hill Towers

- ❖ Free pick-up & delivery
- ❖ Free storage for winter clothing & comforters after cleaning
- ❖ Professional tailoring & alterations
- ❖ Wash & fold services
- ❖ House cleaning services



- ✓ Wedding gown cleaning & storage
- ✓ Draperies & curtains
- ✓ Rug cleaning
- ✓ Shoe shine & repairs
- ✓ UGG boot cleaning

247 St James Place | (215) 925-2888

12th & Arch Streets  
Philadelphia, PA 19107

Make the Market your grocery shopping destination!  
Can't make it here?  
**We now deliver!**

**mercato**

Use promo code: RTM10 for \$10 off of your order of \$20 or more.  
Available only for first time users.  
[ReadingTerminalMarket.org](http://ReadingTerminalMarket.org)

Open Every Day 8 AM - 6 PM  
215-922-2317 ♦ [ReadingTerminalMarket.org](http://ReadingTerminalMarket.org)

[RdgTerminalMkt](https://www.facebook.com/RdgTerminalMkt) #LoveRTM



## OPEN HOUSE

**Tues., April 9**  
**8:45 a.m.**  
**Grades Pre-K - 12**

# IN THE CITY AND OF THE CITY

**FRIENDS SELECT**

*Quaker Education for Students in Grades Pre-K through 12*

FRIENDS SELECT SCHOOL 17th & Benjamin Franklin Parkway, Philadelphia, PA 19103 215.561.5900

STEPPING BACK IN TIME

BY SANDRA ROTHMAN

Trouble on Society's Hill

Invite you to step back in time by taking a short stroll to where Pine intersects Front Street. If you look north, it's obvious that this spot is on an elevation. A slight one, but an elevation none the less. Now turn west and regard the middle of the block between Pine and Delancey Streets. Somewhere here, in the early 1680s, stood the headquarters of the Free Society of Traders, its location called "Society's Hill" by locals.

This enterprise was conceived by William Penn as a joint-venture stock company pivotal to his plans for the colonization of the land granted to his family in 1681 by King Charles II. Though short-lived, the Society contributed in many ways to the chaos, friction and rancor that defined Pennsylvania's (and by association Philadelphia's) first decade.

**An Experienced Promoter**

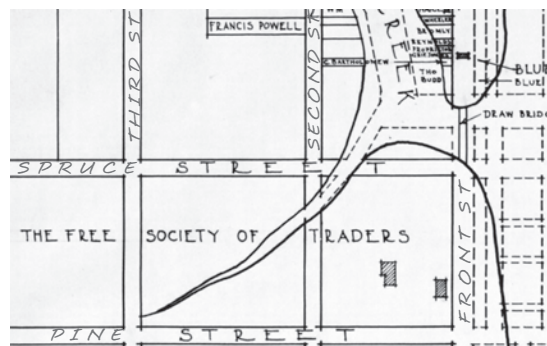
Penn was an experienced marketer, having been active in the affairs of the Quaker settlement of West New Jersey since 1675. He understood that the success of his "Holy Experiment" hinged on not only recruiting a robust flow of emigrants but, more importantly, securing a steady infusion of capital during the early years of settlement.

Therefore, Penn carefully crafted promotional material presenting Pennsylvania as an important opportunity for enterprising Quakers to build a religious refuge, while concurrently growing their personal wealth by being among the "First Purchasers." He then set about using his considerable networking abilities to attract the support of wealthy Friends from England, Ireland and Scotland.

Finally, Penn encouraged this group of elite merchants, landowners and personal associates to form the Free Society of Traders in order to direct the economy of his fledgling colony. In return for its investments, he granted stockholders important concessions.

**The City of Brotherly Love**

One such consideration was the exclusive right to property in Philadelphia, the proposed center of government and commercial activity. The Society's president Nicholas More, for instance, was granted most of the frontage on Spruce between Front and Second Streets as a bonus for his personal purchase of a 10,000-acre tract near where Temple University stands today. (Westmoreland Street is the remaining vestige



A detail from the 1684/1932 map drawn by Wm. Wilson Pollock with historical collaboration from Albert Cook Myers, showing the trading house of the Free Society of Traders on Front Street.

of that transaction.) More built his own townhouse at the corner of Spruce and Second Streets. The fact that he spent little time there contributed to the organization's eventual demise.

Penn also gave the wide swath of land between Spruce and Pine Streets, from Front Street to the Schuylkill River, to the Free Society of Traders. This decision would soon cause serious financial problems for Penn, because he agreed that the company should pay an annual tax of only one shilling, depriving himself of substantial income.

**Positions of Power and Profit**

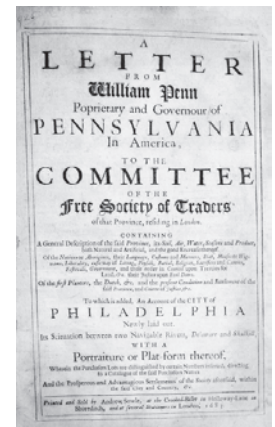
Pennsylvania's proprietor reserved the right to initially appoint all office holders for life. It was an enormous power and Penn put it to good use. He gave important positions almost unvaryingly to men with at least a five-thousand-acre investment in the colony. Most were also stockholders in the Free Society of Traders.

Wealth, however, did not assure competence. Nicholas More, a doctor by training, became the Society's president because of his substantial investment in the company. It was a poor choice, since he had neither the interest nor the leadership skills needed to be an effective one. And as a reward for a considerable personal outlay in purchasing his 10,000-acre expanse, Penn installed More as chief justice of the provincial court, provincial secretary and clerk of the council, all positions of high influence. These decisions would come to plague Penn when More later abused this power in service to his own private interests.

**Grand Designs**

The Free Society of Traders had big plans to shape the economy of Pennsylvania. An agricultural labor force of 200 indentured servants was envisioned to work the Society's land, producing

*A Walking Tour Through Local History*



Penn carefully crafted promotional material presenting Pennsylvania as an opportunity for enterprising Quakers.

*continued on Page 13*



**PHILADELPHIA'S PREMIER  
IN-HOME PERSONAL CARE AGENCY**

At Home Helpers, our caregivers undergo a detailed background check prior to employment. As a licensed homecare agency, employees are fully insured and bonded eliminating your financial risk liability. We offer ongoing training in fall prevention and dementia care. Our services include:

- Dementia care
- Fall prevention care
- Personal hygiene
- Light housekeeping
- Medication reminders
- Meal Preparation
- Companionship
- Direct Link Personal Response System
- And much more...

**Call Me for a No-Cost Assessment  
Patty Grace at (267) 402-7271**



**COMMUNICATION MADE EASY**



ON DEMAND PRINTING SOLUTIONS

Media Copy is a full service digital printing company with offices in Center City Philadelphia, and the suburbs. State of the art technology, extraordinary customer service and attention to detail place us apart from the competition. Our infrastructure allows us to provide our customers with high quality products in a cost effective fashion. From conception to completion, the basic to the complex, we are on the job with the personal attention you should expect.

**Philadelphia Location:**  
1310 Sansom Street · Philadelphia, PA 19107  
phone: 215.717.5151 · fax: 215.717.7400

**Media Location:**  
11 East State Street · Media, PA 19063  
phone: 610.566.8499 · fax: 610.566.4513

[www.mediacopyonline.com](http://www.mediacopyonline.com)

*Great*  
**Searching For A Good Plumbing,  
Heating & Air Conditioning Company**

**the top 5 REASONS TO CALL US FOR ALL YOUR  
PLUMBING, HEATING & COOLING SERVICE**

**SHCA  
MEMBER**



**Winner  
2009-2015**



1. REPAIR GUARANTEE If a repair fails during the first year, we will repair it again for FREE
2. JOB DONE RIGHT We will fix it right the first time Or You Don't Pay
3. NO SURPRISES GUARANTEE We will give you a price up-front before starting the work. Once we start the job the price will not change, even if it is more work than we anticipated.
4. FAIR PRICE GUARANTEE No need to shop around. Our pricing is from our Flat Rate Book. If ever in doubt, always ask your contractor to show you their flat rate book to show how they arrived at the price.
5. SECURITY GUARANTEE Our technicians are background checked, drug tested, uniformed and wear company identification

**Members of Society Hill Civic Association:  
Take \$55. off any plumbing, heating or A/C repair, and \$333. off any heating and A/C installation.**



**Joseph Giannone**

PLUMBING • HEATING • AIR CONDITIONING

[www.calljg.com](http://www.calljg.com) • 215-383-2957



**SYNERGY<sup>®</sup>  
HomeCare**  
*Care for Everyone*



- We Offer:**
- Alzheimer's & Dementia Care
  - Companionship
  - Light Housekeeping
  - Medication Reminders
  - Personal Care
  - Errands & Shopping
  - Bathing Assistance
  - Meal Preparation
  - Daily Living Assistance
  - Respite Care

**Call for your FREE Care Assessment!**

**267.499.4700**

[synergyhomecare.com/philadelphia](http://synergyhomecare.com/philadelphia)

## Trouble up on Society's Hill *continued from Page 11*

commodities for immediate export. In addition, strong revenues were expected from the manufacture of hemp and linen, as well as from mining enterprises, fisheries and whaling expeditions. Factories in Philadelphia and along the Delaware and Chesapeake Bay were expected to be the supply centers of the new colony and, as such, were projected to be the greatest source of profit.

### Problems from the Start

The company quickly lost hope, however, that it might assume a controlling role in the economic development of Pennsylvania. The Free Society of Traders was defeated before it even entered the race.

Apparently, no one had given much thought to the large group of entrepreneurs already in place, already familiar with the complexities of colonial trade and unwilling to give an inch to Penn's elite group. These local merchants had by now provisioned successive waves of immigrants, selling supplies to hundreds of newcomers and capitalizing on the needs of those who arrived too late in the year to get crops in the ground.

Another immediate concern was access to cash. The necessity of buying provisions from other colonies had drained Pennsylvania of specie and the Free Society was forced to take credit where coin was unavailable. "We are forced to trust most what we sell, and People will not pay in 6 or 9 months," the treasurer reported. Within a year his letters summarized the falling state of the company: "We have neither credit nor money, and now must sue people at law, or be forced to loose all."

Compounding their financial difficulties was the refusal of English stockholders to honor their debts once reports of mismanagement trickled back to England. This was a crushing blow

because it was apparent that the Free Society of Traders lacked sufficient capitalization to continue until Pennsylvania could develop an export trade.

### Politics

Ultimately it was politics that brought the proprietary venture to its knees. William Penn had offended too many older settlers and new merchants by placing his company in a position of special advantage. When it came time to confirm the charter for the Free Society, it was voted down, and the venture remained without legal status as a corporate body.

Unable to collect its debts and inadequately financed, the Society found it impossible even to pay the wages of its employees. This, in turn, led to further embarrassments. A succession of suits brought against the Society from 1684 to 1686 caused its final collapse as a significant component in Pennsylvania's trade. Thereafter, the Society functioned only as a land company, gradually selling its extensive property to extinguish its debts.

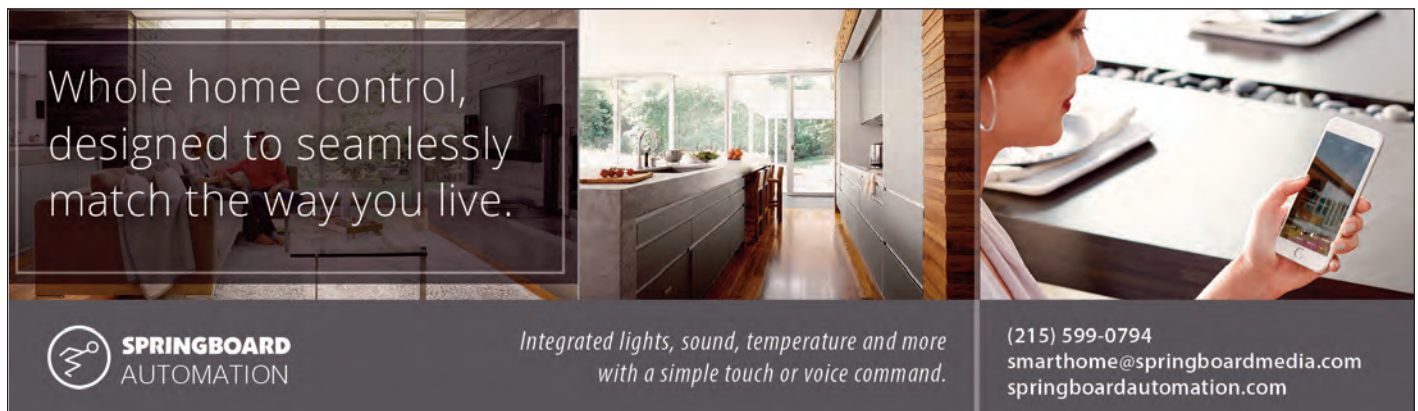
### Its Enduring Legacy

The Free Society of Traders slowly faded from memory. It accomplished little and left not much in the way of a paper trail. The company might be totally forgotten today except for an interaction that happened between esteemed historic preservationist (and former neighbor) Charles E. Peterson and a taxi driver, in the early days of our neighborhood's renewal. When giving the driver instructions, Charlie off-handedly directed him to the "Society's Hill," recalling the old nickname. The term stuck, and the rest is history.

"For the love of God, me and the poor country, be not so governmentish, so noisy and open in your dissatisfactions!" wrote William Penn, only three years after the "Holy Experiment" had been launched.

Penn to Council, August 19, 1685, Gratz Collection

**Sandra Rothman**, a retired educator for the school district of Philadelphia, is the *Reporter's* editor in chief.



Whole home control,  
designed to seamlessly  
match the way you live.

**SPRINGBOARD**  
AUTOMATION

*Integrated lights, sound, temperature and more  
with a simple touch or voice command.*

(215) 599-0794  
smarthome@springboardmedia.com  
springboardautomation.com

## ON THE GO

BY JANE BIBERMAN

## At Home in Kenya



**Jane Biberman wearing Masai beads.**

Like many people, I was introduced to Kenya by the movies *Out of Africa* and *Born Free*. I was not disappointed when I finally got there this past October. It was a place of huge skies and vast savannahs, of zebra, giraffe, elephants, lions and rhino.

I had seen countless documentaries on these African animals, but when I came close to them — as close as four feet away from a mother lion and her cubs, I felt a part of nature and the landscape in a way that is hard to describe. Being there makes all the difference.

However it was not the animals which compelled me to take this trip, but the unusual opportunity to meet and travel with the native Masai women of Kenya on a trip arranged by MADRE, a New York-based charitable foundation that was celebrating its 35th anniversary “fighting for feminist futures” in poor areas around the world.

For the past 20 years, MADRE has worked in Kenya alongside the Indigenous Information Network (IIN), its partner on the ground. Climate change has sorely affected this East African nation. Drought has devastated the people who depend on raising animals and farming for a living, while floods have wiped out entire villages. The MADRE and IIN groups were to meet in Nairobi in mid-October.

My friend Emily and I flew to Nairobi several days before the rest of the group. With arrangements made by the incomparable Elevate Destinations based in Cambridge, Massachusetts, we went first to Olerai House in Navaisha to relax and get acclimated. Driving through the Great Rift Valley, we arrived around 9 in the morning and were greeted by the friendly staff who showed us to our small cottage surrounded by flowers and zebra. Some 20 years ago, the owner, Oria Douglas Hamilton, had transformed her 300-acre home into a sanctuary for zebra and giraffe, who run free. While not domesticated, they won't hurt you either. We quickly got used to walking all over the grounds surrounded by wildlife. We dined outdoors on fish from Lake Naivasha, which we toured by boat one morning. Colorful birds we had never seen before flew from tree to tree while hippos swam in the water.

We were sad to leave “paradise” but excited to meet the MADRE and IIN women at the old British Fairmount Hotel in Nairobi. There were

nine of us guests and three MADRE staff women, along with IIN leaders Rosemary, Edna and Lucy. As they were fluent in English, like most Kenyans, we had no trouble communicating. The next day, we began the conference on climate change, discussing new ways of making a living — from beekeeping to raising chickens. In the afternoon, we visited Karen Blixen's home not far away. We could all imagine Robert Redford sitting on the porch.

The next day, we set off in two Land Rovers for Kilgoris, a six-hour ride away toward the Massai Mara. We spent a few days visiting native villages and homes of the Masai. Native women from all over Kenya joined us. Together, we discussed everything, including female genital mutilation, which the IIN is trying to eradicate. We helped to plant seedlings and walked around Rosemary's farm, where thin cattle grazed. We ate with the native Kenyan women and partied with them too. One night, they surprised us with a cake on Jenny's birthday. Jenny, from San Diego, was overwhelmed, as were we all. Masai men in tribal finery danced and sang, and we all joined in. I'm sure none of us, least of all Jenny, will ever forget the night.

We MADRE women were sad to leave our new friends who waved to us as we set out for the famed Masai Mara Game Park. We spent three days in the reserve, where elephants became as familiar as street dogs at home. Large animals walked around our tents at night, while the screech of hyenas disturbed our sleep.

We flew back to Nairobi in a small plane; the normal way of traveling in Kenya is by air as so many of the roads are rough. After a farewell dinner, the group scattered. Emily and I then boarded a small plane to Lewa, also recommended by Elevate Destinations. About an hour's flight north of Nairobi near the equator, the Lewa Conservancy is a bit smaller than the Masai Mara, but we liked it much better as the roads were quite smooth. We stayed at a marvelous place called Sirikoi Lodge, where all kinds of animals could be seen in the distance. Monkeys and baboons, as well as impala and antelopes were common on the grounds, where a beautiful, well-appointed tent was our home for the next five days. It was by far our most luxurious housing. We went on several game drives and also took

*continued on Page 15*

ON THE GO

continued from Page 14

short safaris on horseback. We finally saw both black and white rhino, Grevy's zebras with their distinctive round ears, common zebra and finally, a leopard. Every day we awoke to endless savannah and vast sunny skies.

Leaving Kenya after only two weeks was difficult. Emily and I have been writing to our new friends and are planning a return visit this year to what we now think of as our second home.

**Jane Biberman**, freelance writer and former editor of *Inside Magazine*, has contributed to a variety of publications.



**Lucy, founder of the Indigenous Information Network, has addressed the UN on climate change.**



**Elephants are a familiar sight at the Masai Mara Game Park.**



**Mother lioness and her cub.**



**Grevy's zebra has round ears.**



*The Luxury.*  
—  
*The Views.*  
—  
*The Lifestyle.*

**THE ST·JAMES  
WASHINGTON SQ.**

**CENTER CITY APARTMENTS**  
200 W. Washington Square  
Philadelphia, PA 19106  
TheStJamesPhiladelphia.com  
844.762.5416

## WELCOME BASKETS

BY MARTHA LEVINE

## 20 years of Welcome Baskets for New Neighbors

Homeowners who are new to our neighborhood are in for a treat. This Welcome Basket is packed with goodies and gift certificates to area businesses, restaurants, theatres, shops, services and museums. This June marks the 20th anniversary of the Welcome Baskets Program. To date, we have presented over 880 baskets to new first-time owners in our neighborhood.

If you or someone you know is a first-time homeowner in Society Hill within the last year, call Program Chair Martha Levine to set up an appointment to receive this gift in your own home. Reach her at [marthalev6@gmail.com](mailto:marthalev6@gmail.com) or 215-629-0727.

Join us in welcoming these new families to our special community!



Irene and Shaun Connolly



Kris Faycock, Ligaya Hernandez and Malia



Karen Sinclair



Ling J. and Ben He



Bob and Susan Higgins-Purcell with Murphy



Herb, Grace and Karen Cushing with Daisy

Photos by **Martha Levine**,  
vice president of SHCA.



WELCOME BASKETS

*"This is much more than I expected!"*



**Will, Matisse and Maximus**



**Grant and Elizabeth Norris with Benji**



**Dell and Chris Williams**



**Stephen Klein**



**Catherine Glenn and Erin Galbally**



**Michael and Breanne**



**Guy and Beverly Hoffman**



**Thomas Lindbergh**



**Armando Llanes and Dennis Duffy**

## SOUTH STREET HEADHOUSE DISTRICT

BY CLAIRE BATTEN

## A Sweet Addition to South 5th Street



Try one of these goodies with a cup of coffee!

Aurora Grace is the latest addition to the South Street Headhouse Business District. Located midblock on South 5th, sandwiched between Lombard and South Street, Aurora Grace is both a bakery and an out-of-this-world chocolatier.

Aurora Wold, the founder of Aurora Grace, has created a magical world of fine chocolates and cakes. The first thing you notice when you step into the café/store is the treasure trove of beautiful, jewel-like bonbons. Just reading the names of Aurora's confections will cause you to salivate!



Hand-painted beauties beckon.

The chocolates themselves are works of art; the current best seller is Dulce de Leche & Caramelized White Chocolate. The luminous colors and high-gloss effects are created by painting chocolate molds with colored cocoa paint. Recipes change to reflect the seasons. For the fall/winter

season, the store is featuring Caramel Apple Crisp with White Chocolate (these beauties are green with a gold swirl), Pumpkin Caramel with a Gingersnap Crunch and my favorite, the Liquid Salted Caramel (these are recognizable by their copper splatter coloring). The store will soon be launching imaginative new flavors to reflect the advent of spring.

According to owner Aurora, the bakery is sensitive to the increasing demand for allergen-free products. She says, "We have some vegan chocolates and our French macarons are already gluten free. We are also working on making all our chocolates gluten free, trying to develop recipes, for example, that make the 'crunch' in our chocolates completely gluten free."

The bakery's popular French macarons are available both in standard size and as petit fours. Flavors include pistachio, coffee buttercream, lemon poppy seed and toasted coconut & chocolate ganache.

You may have spotted some of Aurora Grace's hand-painted chocolate bars in a number of Philadelphia outlets, such as the Reading Terminal Market and Old City's Art in the Age.

## Refining Her Art

Aurora credits her interest in food to her early years living in a zero-carbon footprint, sustainable Eco-Village in Ithaca, New York. She started helping out in the communal kitchen at the age of three and went on to hone her skills by cooking as part of the community. She was then best known for her oatmeal-raisin cookies. She was also first port of call whenever there was a charity bake sale at her high school.

This master chocolatier started in the restaurant business from ground level in high school as dishwasher in a local restaurant. From there, Aurora rose through the ranks as a prep chef in Vermont and chef de garde-manger in a well-regarded Italian restaurant. She then trained as a pastry cook in some of the best kitchens in New York City. Aurora enjoyed her time at a Michelin one-star in Soho, The Musket Room, and then joined the team at Jean Georges, followed by Eleven Madison Park.

The next phase in her career fell into place quickly. She tells us, "My fiancé moved to Philadelphia to start work with Comcast, so we moved from New York to Center City Philadelphia. I've spent the last 18 months running my business via an online Etsy store and taking a stand at different farmers' markets. I then thought, 'Why not open my own café?' I knew the timing was right when I saw this store, which had previously been a bakery. I thought South Street was a fantastic location. I'd been looking for the right place for over a year, then walked into this store and was immediately sold on the space."

Aurora Grace can be found at 517 S. 5th Street. The store is open Wednesday to Sunday, 8 a.m. to 4 p.m. Chocolates and macarons can also be bought online via Etsy. For more information, visit [www.auroragrachocolates.com](http://www.auroragrachocolates.com).



Tempting gluten-free French macarons.



**Elfant & Wissahickon**  
— REALTORS —  
Your Neighborhood Resource  
For Everything Real Estate

**Claudia McGill**  
215.893.9920 claudiamcgill.realtor



Old Pine Street Church  
412 Pine St.  
Sunday Worship 10:30am

# What's driving Compass?

Technology driven marketing that will sell your house faster and for more money than traditional real estate brokerages. Call Fred Manfred to learn more about how Compass will serve you.

**"Fred sold our home exceedingly quickly and for a price we never expected."**

- Brian & Brittany Coleman



**Fred Manfred**  
215.687.8687  
fred.manfred@compass.com  
Five Star Real Estate Agent — Philadelphia Magazine

COMPASS

ON THE  
SQUARE  
REAL ESTATE

The Genovese Colvin & Pelegrin Team is a team of real estate licensees affiliated with Compass Pennsylvania, LLC. Compass Pennsylvania, LLC is a licensed real estate broker and abides by the equal housing opportunity laws.

COMPASS RE | 267.435.8015

## Intelligent Exercise with Profound Results!

Private or duet sessions available at our fully equipped studio at 9th and Spruce Streets

Inquire about our new client special.



*PilatesByPamela*

Stott Pilates Certified Instructor  
914-552-0288  
pilatesbypamela@gmail.com

www.pilatesbypamela.com

## R. CHOBERT PAINTING

Residential | Commercial | Interior | Exterior

www.rchobertpainting.com

Creating  
Beauty  
Since 1967



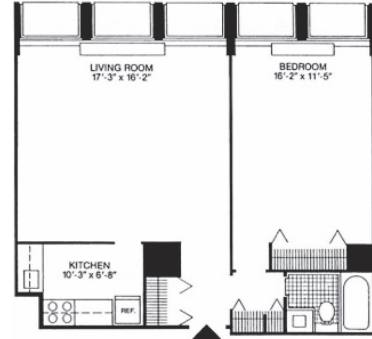
**Michael Chobert** 215-389-7788  
Fax 215-755-6655  
rchobertpainting@aol.com  
641 Reed Street, Phila. PA 19147

# Selling Society Hill Towers Condominiums for 38 Years

## FOR SALE! Sunny One Bedroom



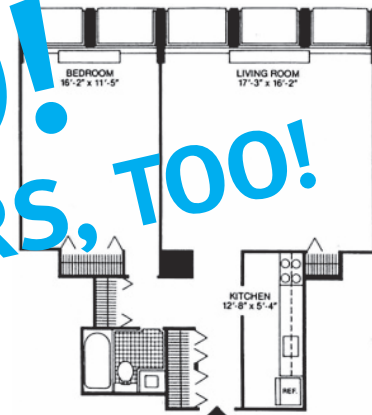
with modern finishes, floor-to-ceiling window walls, an updated kitchen and wood floors throughout.  
**683 sf**  
**Offered for \$259,900**



## FOR SALE! Updated One Bedroom with Southern Views



Updated one bedroom with southern views toward the river and Society Hill with an open modern kitchen with high end finishes and breakfast bar, white tiled bathroom.  
**699 sf**  
**Offered for \$164,900**



**WE CAN SELL YOURS, TOO!**

## Some of our recent sales at Society Hill Towers

Thinking of buying or selling a condo at Society Hill Towers?

Call us. We are happy to help you.

*Allan Domb*

- |           |           |           |
|-----------|-----------|-----------|
| 3B North  | South     | 2B South  |
| 11BCD     | 8F South  | 26C West  |
| North     | PH6 South | PH5 South |
| 24G North | 21G West  | 12G South |
| 14C South | 27B West  | 29E South |
| 28E North | 22AH West | 10AH      |
| 23B South | 5B North  | North     |
| 26C West  | 19A North | 4E South  |
| 26B West  | 4G North  | 24G North |
| 10E West  | 31C West  | 2E West   |
| 19BCD     | 24B West  | 8F South  |



**AD Allan Domb Real Estate**

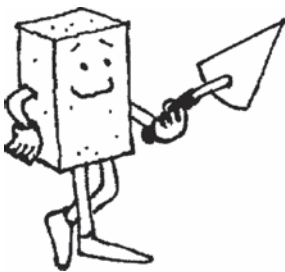
PHILADELPHIA'S LARGEST SELLING CONDOMINIUM REALTOR® WE COOPERATE WITH ALL REALTORS®  
 1845 Walnut Street, Suite 2200, Philadelphia, PA 19103 Phone: 215.545.1500 allandomb.com domb@allandomb.com



**'FIX THE BRIX'**

# Who's in Charge of Maintaining Our Sidewalks?

BY MARTHA LEVINE



**Rick the Brick**

It would be great if the City of Philadelphia helped neighborhoods keep their sidewalks in good condition, but they don't provide that service. Therefore, it's up to us to make sure our sidewalks are not "trip worthy" and also look good.

Since 2009, to provide an incentive to home owners to maintain their sidewalks, SHCA has offered a subsidy program called "Fix the Brix." We help you to maintain your property which extends to the curb.

**Here's how it works:**

SHCA offers a 40 percent subsidy of the cost of repair, up to \$400 for current members, and up to \$300 for non-members. It pays to be a member!

- Take a before photo of your problem front sidewalk and email to me. See below for contact information.
- Hire a mason or tree-care expert (if it involves the tree or tree pit).
- We have a suggested list of contractors if needed.
- After the work is completed to your satisfaction, make a copy of the invoice (and cancelled check if possible) and mail it to us at: SHCA, PO Box 63503, Phila. PA 19147.
- You will receive a check from SHCA within a few weeks.



**Loose bricks like these can cause trips, so get them fixed!**

Thank you to the over 200 households who have participated in the Fix the Brix program and made Society Hill a safer and more attractive place. For more information, contact me at marthalev6@gmail.com or 215-629-0727.

**An Exciting, Long-Awaited Announcement!**

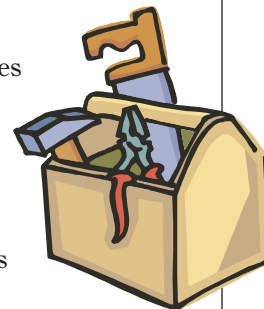
On February 6, Giant Food Stores officially announced their plans to open three new Giant Heirloom Market grocery stores in Philadelphia. The largest of these stores will be located at Abbott Square on the 200 block of South Street.

Giant plans to open the new 17,000 square foot grocery store by the end of 2019.



**SHCA List of Contractors**

Free to all current members, this 14-page list provides names and contact information for general contractors, painters, electricians, plumbers, roofers, masons, HVAC, landscapers, tree-care experts, window replacements — you name it. To have the latest updated list mailed to you, or if you have a contractor that you would like to recommend, please contact Martha Levine at marthalev6@gmail.com or 215-629-0727.



## Our New Home



*Judy Moon*  
and Associates

232 South 4th Street, Suite 2F  
Philadelphia, PA 19106  
267-671-0861  
www.judymoon.com

Only two short blocks from Washington Square.



## Silence and Light... we have both.

Join us for weekly worship  
Sundays at 10:30 a.m. for one hour

**Monthly Meeting of  
Friends of Philadelphia**  
(Arch Street Quakers)  
320 Arch Street in Old City  
www.ArchStreetFriends.org

# INDEPENDENCE PLACE

233 - 241 S. 6th Street



Three bedroom, two bathroom featuring a sun-soaked open floor plan with a luxurious master suite, beautifully appointed bathrooms, balcony and see-forever views from the river to the skyline.  
**1,734 sf | \$1,095,000**



Completely renovated south-facing 1 bedroom plus alcove, 1.5 bath on a high floor with a balcony, open kitchen, great natural light, huge walk-in closet and laundry room.  
**1,205 sf | \$495,000**



One bedroom with balcony with views of Washington Square featuring an updated open kitchen, renovated bathroom, excellent closet space and washer/dryer.  
**860 sf | \$329,900**



Completely renovated, south-facing two bedroom, two bathroom with a chef's kitchen, balcony, wood floors and beautifully appointed bathrooms.  
**1,387 sf | \$899,900**

## Recently Sold by Allan Domb Real Estate at Independence Place

1605-1606-I	2407-II	1906C-I	612G-I	1906-II	2106-II	2102-II
2408-I	1505-II	1102-I	1901K-I	1511-I	1102-I	812-II
1509D-I	1410E-I	706F-II	1412B-II	301K-I	1206-II	502-II
1802L-II	1907H-I	608C-II	1906-7-I	706F-II	1706-I	1506-II
				2107-I	1501-II	

**AD** **Allan Domb Real Estate**  
 PHILADELPHIA'S LARGEST SELLING CONDOMINIUM REALTOR® WE COOPERATE WITH ALL REALTORS®  
 1845 Walnut Street, Suite 2200, Philadelphia, PA 19103 Phone: 215.545.1500 allandomb.com domb@allandomb.com



## ON OUR SHELF

BY VIVIENNE WOODWARD

## Emphasis on Interconnectiveness

It's March, and here on the East Coast we're in the "dog days" of winter. We're mostly trapped inside, and the days take on an unreal quality, as if we're watching life and not always participating in it. Sound at all familiar? If so, it may be time to grab a cup of hot cocoa and lean into that feeling by reading Kate Hope Day's new novel, *If, Then*.

The characters are stuck in their own kind of dog days, as they struggle with inaction or decision. Ginny questions her marriage. Mark is frustrated by career stagnancy. Leah struggles to find herself in motherhood. Samara mourns her mother's passing. They are all flirting with the kind of magical thinking that makes us wonder "would things be different *if...*?"

Most of us eventually realize the futility of this kind of thinking, but what makes this novel an interesting one is that the "if, then" hypotheticals for these characters begin to manifest. They catch glances of different versions of themselves, are visited by people who have already passed. One morning Ginny watches as another version of herself plays out nearly her same routine, but there's a feeling of warmth she doesn't recall, a sense of affection. Who is this other Ginny, and what choices did she make that improved the relationship she has with her son?

The characters think they know what is real and what is vision, but they all start to wonder if they're losing their minds. For readers,

it becomes less and less clear what reality actually means in this novel.

Further, the visions are somehow linked to activity within the local, supposedly dormant, volcano. A volcano which Mark suspects is on the brink of disaster for the residents of their Oregon mountain town. By linking the characters' existential visions with volcanic activity, the novel weaves together ecology and metaphysics. This emphasis on interconnectedness is one of the most thought-provoking aspects of the novel and one that will make amateur philosophers out of the best of us.

This novel excels in the abstract. Readers will sense that something foreboding is coming without quite knowing why or what. They will sense the intentional discrepancies in the plot without quite being able to pinpoint what's going on. It is a good book to get lost in, to make you think outside whatever room you're stuck in this March. It is not a perfect novel. You could pick apart little pieces of the plot that feel either over or under-examined. You could question the frequent point of view switches. But for readers looking to transport themselves, to suspend their reality for an afternoon and wonder "what if?" — it may be just the thing.

**Richard De Wyngaert** is the proprietor of Society Hill's only local, independently owned bookstore, Head House Books, located at 619 S. 2nd Street. Events Coordinator **Vivienne Woodward** wrote this article.



## EARLY MUSIC SERIES

## Authentic 18th-Century Salon Experience

For the second consecutive season, PhilaLandmarks invites neighbors to an authentic 18th-century salon experience, complete with period instruments and period music in two historic homes. All events are Pay-What-You-Wish, \$25 suggested donation, that includes the concert with educational commentary by the artists and a wine and cheese reception to follow. Reserve your seats at [www.philalandmarks.org/events](http://www.philalandmarks.org/events) to guarantee a spot. For information, call Kayla Anthony, 215-925-2251x201.

**New Beginnings by the Franklin Quartet**

Thursday, March 14, 7:30 to 9:30 p.m.  
Powel House, 244 S. 3rd Street

The Franklin Quartet takes you behind the scenes as five celebrated composers first explore the quartet genre. The works by Mozart, Wikmanson, Haydn, Boccherini and Arriaga make for highly pleasurable listening.

**Dialogue of the Graces by Kleine Kammermusik**

Thursday, April 11, 7:30 to 9:30 p.m.  
Hill-Physick House, 321 S. 4th Street

An evening of French Baroque with Geoffrey Burgess and Meg Owens, oboes and recorders; Rebecca Humphrey, viola da gamba and cello; Stephanie Corwin, bassoon, and Leon Schelhase, harpsichord.

**Metamorphoses:****Musical Transformations by Night Music**

Thursday, May 9, 7:30 to 9:30 p.m.  
Powel House, 244 S. 3rd Street

One of the most common stories told in eighteenth- and early nineteenth-century music is that of transformation. In this program, we explore this theme through works spanning the late Baroque and Classical eras, from Corelli and Couperin through Haydn and Hummel.



# THE CADWALADER HOUSE

240 S. 4th Street

*A chance to live in history!*



## Walk the same halls as:

- George Washington
  - John Adams
- Meriwether Lewis
- Richard Henry Lee
- Francis Lightfoot Lee

The historic Cadwalader House offers the opportunity to create a custom mansion in the heart of Society Hill by restoring this historic property to its original splendor. The home spans five stories and will offer grand entertaining space and large bedroom suites. There is a private garden and space for two parking spots.

Built in 1829 by Joseph Norris, this historic home became known as The Cadwalader house thanks to Judge John Cadwalader who both resided in and had his legal office there. Cadwalader was best known for serving one term in the US House of Representatives and then later becoming a United States District court judge, an appointment made by his good friend President James Buchanan. Over the years the residence has served as the home of the Mutual Assurance Company and offices for the Archdiocese of Philadelphia. 9,003 sf | **\$2,295,000**



604 S. Washington Square



Deluxe 1 bedroom plus den with balcony offering sweeping views from the Delaware River and across South Philly; the home has wood floors, custom closets, and an updated kitchen and bath. **1,003 sf | \$349,900**



Washington Square facing 1 bedroom on a high floor with balcony, high-end finishes throughout including custom built-ins and Stark carpet and a new bathroom. **843 sf | \$339,900**



South-facing deluxe 1 bedroom on a high floor with magnificent river and city views from the home's private balcony. The residence has great natural light, excellent closet space and generously sized rooms. **1,003 sf | \$344,900**



**PHILADELPHIA'S LARGEST SELLING CONDOMINIUM REALTOR® WE COOPERATE WITH ALL REALTORS®**  
 1845 Walnut Street, Suite 2200, Philadelphia, PA 19103 Phone: 215.545.1500 allandomb.com domb@allandomb.com





---

**HEADHOUSE FARMERS' MARKET**


---

BY KARINA CLOUGH

## Early Spring at the Headhouse Market

As winter wanes and spring approaches, new produce begins to appear at the Headhouse Farmers' Market. We anticipate a good crop of spring escarole, arugula, kale and peas to be harvested in late March and early April. We will also continue to see apples, which have been stored well to ensure freshness and crispness,

as well as potatoes, radishes, carrots, squashes, hardy late winter greens and greenhouse lettuce.

In honor of spring's arrival, several Headhouse merchants have shared some of their favorite seasonal recipes. The dishes below showcase produce and other items sold in the Sunday market.

### Blooming Glen Farms Spring Tonic Soup

Serves 4

2-3 tablespoons butter  
 1 large leek, chopped  
 2 carrots, grated  
 2 cloves garlic, minced  
 2 quarts chicken broth, vegetable broth or water  
 1 large colander of nettle tops\* (see note)  
 1 large handful of dandelion greens  
 1 cup oat flakes or 1 cup diced potatoes  
 1 splash of heavy cream, if desired  
 salt and pepper to taste

Melt butter in a medium-sized soup pot and add leek, carrots and garlic. Sauté until softened, about 5 minutes.

Add the broth and bring to a simmer. Add the potatoes or oats, and stir until cooked, about 20 minutes.

Add the greens and stir until wilted. Add cream, if using, adjust seasonings and enjoy.

\*Raw nettle tops can sting the skin; wear gloves when handling. You can snip them with scissors, rinse well, and drop them into the soup. Once cooked, they are harmless.

### Otolith Seafood

#### Smoked Coho Salmon with Tapenade

This is an ideal "make your own" appetizer as part of a cocktail buffet or a shared first course at a casual dinner. Guests can assemble the canapés to their preference.

Serves 4-6 as a first course, or more as part of a cocktail buffet  
 ½ lb smoked Coho salmon strips cut into ½ inch pieces  
 2 tablespoons capers, coarsely chopped  
 4 oz. pitted Kalamata olives, coarsely chopped  
 4 oz. roasted red pepper diced  
 1 tablespoon fresh lemon juice  
 4 tablespoons extra virgin olive oil  
 2 baguettes, sliced  
 2 tablespoons chopped fresh parsley (divided)

Mix capers, olives, olive oil, lemon juice, 1 tablespoon parsley and red pepper. Cover and refrigerate until ready to serve.

Place sliced baguette in the center of a platter. Place dish of tapenade on one side of baguettes, and dish of chopped smoked salmon on the other.

Sprinkle tray with remaining chopped fresh parsley. Serve.

### Griggstown Farm Pan Roasted Duck Breast

(Courtesy of the Food Network's Program Cookworks)

This preparation is super simple. The duck stands on its own, but also pairs well with a sauce or chutney.

Serves 2

2 duck breasts  
 salt and pepper  
 Heat oven to 400 degrees.

With a sharp knife, score the fat side of the duck breasts in a crisscross pattern. Season duck generously with salt and pepper.

Heat a heavy, oven-proof skillet over medium heat. Place duck breasts, fat side down, in skillet and render the fat. This takes about 6 minutes. (Save fat for another use.)

Turn duck breasts over to lean side down, and sear for 1 minute.

Flip breasts over again, fat side down, and place pan in oven to roast for 7-9 minutes for medium rare. Let duck rest 5 minutes and slice thinly to serve.



### Three Springs Farm Apple Sauce

Makes about 6 servings  
 7 apples  
 ½ cup water or apple juice  
 ½ cup sugar, if desired  
 sprinkle of cinnamon, if desired

Rinse, peel and core apples. Cut each apple into 8 pieces.

Place in 3-quart saucepan with juice or water and simmer until apples are tender, about 20 minutes. Watch carefully to avoid burning.

Press apples through a food mill or sieve. Add sugar and cinnamon if desired.

Founded in Philadelphia in 1992, **The Food Trust** is a nationally recognized non-profit dedicated to helping make sure everyone has access to affordable, nutritious food and information to make healthy choices. The Trust partners with Philadelphia's Department of Public Health on the Department's *Get Healthy Philly* initiative to create a comprehensive solution to the issue of food access, improving the health of families and communities through nutrition education, improved school food environments and farmers' markets, such as the weekly Headhouse Square market. To donate to The Food Trust and further the Trust's work in Philadelphia, or at a national level, visit [www.thefoodtrust.org](http://www.thefoodtrust.org).



Top 6% of all Realtors in Prudential Network Nationwide  
Accredited Luxury Home Specialist  
Diamond Award

I am a professional,  
full-time real estate agent  
as well as your neighbor.

■ **PAMELA D. LAWS**

ABR, ALHS, SRES, ASP



Like many of my clients,  
Society Hill is my home.  
I specialize in Center City  
because I love Philadelphia.  
Let me find the perfect  
townhome or condo for you!



**BERKSHIRE HATHAWAY** HomeServices  
Fox & Roach, REALTORS

215.790.5688 pam.laws@prufoxroach.com  
WWW.PHILADELPHIAPROPERTIES.NET

An independently owned and operated member of the Prudential Real Estate Affiliates, Inc.



**Plumer & Associates, Inc.**  
**Realtors**

# Plumer

Center City's largest  
independent Realtor.  
Serving Philadelphia since 1923.

**Residential,  
Commercial,  
and Investment  
Real Estate**

For a complete listing of Center City  
properties visit our website:  
www.plumerre.com



226 South Street, Philadelphia  
info@plumerre.com  
**215 922 4200**

## Ready to make a move?

Let the number 1 team in Philadelphia take your real estate goals and turn them into real estate realities. Whether you're looking to buy, sell, upgrade, or invest, we've got you covered.

### Featured Listings:



**420 S Carlisle Street**  
3 beds | 3 baths  
\$750,000



**2213 Delancey Street**  
5 beds | 3 full + 1 half baths  
\$2,050,000



**2031 Lombard Street**  
5 beds | 7 baths  
\$2,799,900

**Mike McCann**  
*"The Real Estate Man"*  
The **MIKE MCCANN TEAM**

**KW PHILLY**  
KELLERWILLIAMS

Direct | 215-709-4141  
Office | 215-607-6007  
mccann@mccannteam.com

---

**OUR CREATURES GREAT AND SMALL**


---

BY CLAUDIA CARABELLI

## A Paris Adventure

Since the 1980s, Bill and Nancy Jantsch have had six dogs. Three, including their current pup, have been Standard Poodles. Three were lovable mutts.

Poodles are best known for their intelligence and ease of training. A lively, active and fun-loving breed, they don't shed and tend to be good with children. While they may appear "fancy" at first glance, perhaps due to their regular grooming requirements, these dogs are actually impressive athletes. Originally used by the French for duck hunting, they're quite skilled at water retrieving. If you've ever seen a standard poodle in motion, you will notice they have a pronounced bounce to their step.

Seven years ago, the Jantsch's acquired their Paris — named for the perfume, not the city or the celebrity. She was the largest in a litter of nine, with an apricot-colored father and a white mother who hailed from Doylestown. As the last puppy adopted, at four months of age, she came to her new home completely trained. What could possibly go wrong?

Well... things looked to be ideal until one dark, rainy, cold December night soon after she was adopted. Who knew that would be the date when they almost lost both Paris and Nancy? Heading out from their condo in Independence Place for a walk in Washington Square, Nancy was using a retractable lead with a harness that was just a little too big. Coming from Bucks County, and this being only the dog's second night in Philadelphia, Paris was still acclimating to the sounds of the city. As they walked down the driveway, something evidently spooked her, and she panicked. With the lead pulled out to its maximum length, she ran around Nancy's legs, binding her ankles and pulling her over. On the way down, Nancy hit her head on the concrete step and was knocked unconscious. Fortunately, neighbors heard the dog barking, saw her handler prone and not moving, and immediately called 911, while rushing to render aid. The condo concierge quickly called Bill. Help was on the way. Then, as if things weren't difficult enough, the ambulance pulled up just as Paris wriggled free of her harness and took off running through the park.

At this point Nancy had regained consciousness and was in the capable hands of EMTs. As they rushed her to the trauma bay at Jefferson

University Hospital, Bill ran after their dog. He spotted her at the north end of the Square, but she quickly bolted north up 6th Street, past Independence Hall and up to the Constitution Center. Despite running as fast as he could in the cold pelting rain, Bill lost track of Paris in the Constitution Center gardens, gave up the chase and headed to the hospital to see about his wife.

Poor Nancy. That rainy dog walk turned into what would be a three-day hospital stay with a concussion, fractured ribs and shoulder blade, and a collapsed lung. Certainly, more than she'd bargained for.

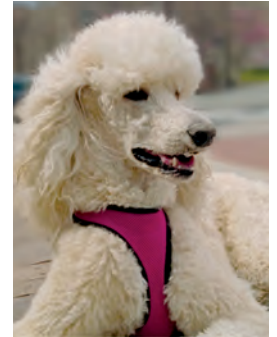
The next morning, with Nancy on the mend, Bill set out to locate their missing pup. As luck would have it, when he contacted the animal shelter, they had just received a call for a "pick up" from the National Park Service for a dog matching her description. There was Paris sitting in a patrol car at 5th and Market! Wet, cold and terrified, she had spent the entire night in a small sheltered area near the Constitution Center. Luckily, she was unharmed.

Happily, Nancy made a full recovery, and Paris developed into a wonderful companion, loyal and playful. The Jantsch's were taken aback by some people who wondered why they'd kept the dog after that fateful night. Smart though the breed may be, it's doubtful that she cunningly planned it as an assault on her new family. They know it was an accident and have forgiven her completely.

National Park Service workers still recognize Paris from her runaway adventure. One even keeps doggie treats on hand for her. If you're lucky, you may spot her with Bill or Nancy, beautifully coiffed, prancing through Washington Square, not a care in the world.

---

**Claudia Carabelli** serves SHCA as a director at large.



**Paris is named after the perfume, not the city.**



**Nancy and Paris practice water retrieving at the beach.**



**SMART  
RESPONSIVE  
EXPERIENCED**  
**BARI SHOR**  
Real Estate  
MatchMaker

Whether you're selling or buying  
a home in amazing Center City,  
Bari Shor cares and *delivers* for you.

I am your neighbor,  
let me be your Realtor,<sup>®</sup> too!



**BERKSHIRE  
HATHAWAY**  
HomeServices

Fox & Roach, REALTORS<sup>®</sup>

215-790-5678

baribshor@gmail.com

215-546-0550 x 5678



**OUR RECORD SPEAKS FOR ITSELF.**  
**Kathy, Patrick, & The Conway Team**

conwayteam.com • kathy@conwayteam.com  
215-266-1537 • 215-850-3842 • 215-627-6005



## Hi Tech. Hi Touch.

A Winning Combination—in Person and on the Web!

**329 LAWRENCE COURT — \$849,000**

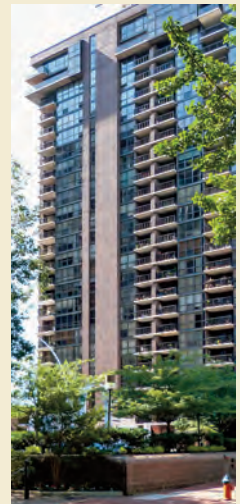
(Society Hill between 4th and 5th, Delancey and Spruce Streets)

3+ Story Brick Front Townhome on a charming cobblestone street. Impeccably maintained and lovely! Cozy feel throughout. 3 Bedrooms, 2.5 Baths + Sitting Room and 4th floor finished Loft Room with access to Deck; Finished Basement, Lovely Garden, 2 Zoned HVAC, Alarm System and 3 Fireplaces. 1,937 Sq. Ft.

**JUST SOLD!**

### *Please Note –*

*"I have Cash Buyers for L-Shaped Studios - 04 or 06  
and 2 Bedrooms - 02 and 16 Units"*



### **Buying? Selling?**

Please call or email your neighbor,

### **Rosemary Fluehr**

Associate Broker, GRI

215-514-9884 – Cell

215-440-8195 – Direct

215-627-6005 – Office

rosemary.fluehr@foxroach.com

www.rosemaryfluehr.com

530 Walnut Street, Suite 480

Philadelphia, PA 19106



**BERKSHIRE  
HATHAWAY**  
HomeServices

**Fox & Roach,  
REALTORS<sup>®</sup>**

MEMBERSHIP REPORT

BY MATT DEJULIO

2019 Membership Drive Ahead of Last Year

By early February, 904 Society Hill residents had already renewed their association membership, about 10 percent ahead of the same time last year. Winners of the restaurant certificates for those who had renewed by December 31, 2018 were Mark & Marie Powers and Leslie Herman. Congratulations to these lucky folks.

So far 67 new members have signed up this fiscal year — down 12 percent from 87 last year at this time — and 344 residents have not yet responded to two mailings, slightly up from last year, which saw a record membership total of 1,206. If you have delayed in sending in your renewal, or wish to join, please do so today.

We welcome each of the over 3,600 households in our neighborhood to join SHCA. Your civic association helps protect your real estate investment by funding many of our improvement projects, as well as providing subsidies to neighbors who plant trees and fix their sidewalks. We help enhance your quality of life when we advocate on your behalf regarding zoning changes, real estate taxes, crime problems and traffic issues. All of this is accomplished through the hard work of our dedicated board of directors, committee members, block coordinators and, most importantly, your membership dues.


Without member dues, SHCA would cease to function. Protect your neighborhood and your real estate investment. **Sign up today!**

Email Mattdejulio@aol.com with questions or comments which will be shared with our board members representing every quadrant in our unique, historic neighborhood.

Matt DeJulio is a retired publishing executive. He has served SHCA as its administrator since 2001.

MONTHLY PARKING

A limited number of monthly parking spaces are still available at the renovated lot at 511 S. Front Street, between South and Lombard Streets. If interested, contact Ed Sullivan with Park America at 610-637-6832.



## Membership Application

Name \_\_\_\_\_

Address \_\_\_\_\_ Apt. # \_\_\_\_\_

City, State, Zip \_\_\_\_\_

Home Phone \_\_\_\_\_

Work Phone \_\_\_\_\_

Email (print clearly) \_\_\_\_\_

IMPORTANT: Today, most everyone communicates via email. Please be sure that we have your current email address — so that you can receive important updates between publication of our community newsletter. All SHCA emails will be judiciously screened, and rarely will we send emails more than once a week. Nor will we share your email address with anyone else. This convenient, 21st-century system helps save our civic association postage costs, while keeping you regularly informed.

<p><b>Residential Memberships</b></p> <p><input type="radio"/> \$ 50 Basic Household Membership</p> <p><input type="radio"/> \$ 40 Senior/Student/Single</p> <p><input type="radio"/> \$ 100 Federal Friend</p> <p><input type="radio"/> \$ 150 Georgian Grantor</p> <p><input type="radio"/> \$ 300 Jefferson Benefactor</p> <p><input type="radio"/> \$ 500 Washington Benefactor</p> <p><input type="radio"/> \$ 1,000 Benjamin Franklin Benefactor</p>	<p><b>Business Memberships</b></p> <p><input type="radio"/> \$ 100 Institutions — 5+ employees</p> <p><input type="radio"/> \$ 60 Institutions — fewer than 5 employees</p>
--	---

**Additional Contributions**

\$ \_\_\_\_\_ Washington Square Beautification      \$ \_\_\_\_\_ Franklin Lights

\$ \_\_\_\_\_ Sidewalk Cleaning/Graffiti Removal      \$ \_\_\_\_\_ Tree Tenders

\$ \_\_\_\_\_ 5th Street Legal Fund      \$ \_\_\_\_\_ McCall School

Total Enclosed \$ \_\_\_\_\_

Charge VISA/MasterCard:

Number \_\_\_\_\_ Exp Date \_\_\_\_\_

Signature \_\_\_\_\_

The following topics are of special interest to me. I welcome receipt of email updates on these topics.

<input type="checkbox"/> Clean-Up Day	<input type="checkbox"/> Washington Square	<input type="checkbox"/> Zoning & Historic Preservation
<input type="checkbox"/> Franklin Lights	<input type="checkbox"/> Social Events	<input type="checkbox"/> 5th Street Development
<input type="checkbox"/> Dilworth House	<input type="checkbox"/> Property Taxes	<input type="checkbox"/> Local Crime Incidents
<input type="checkbox"/> Reporter	<input type="checkbox"/> Fundraising	<input type="checkbox"/> and Alerts

Please return completed application to:  
**Society Hill Civic Association**, P.O. Box 63503, Philadelphia, PA 19147

## NIFTY NEIGHBORS IN MY OWN BACKYARD

BY JANE BIBERMAN

## Richard De Wyngaert

*The Man Who Loves Books*

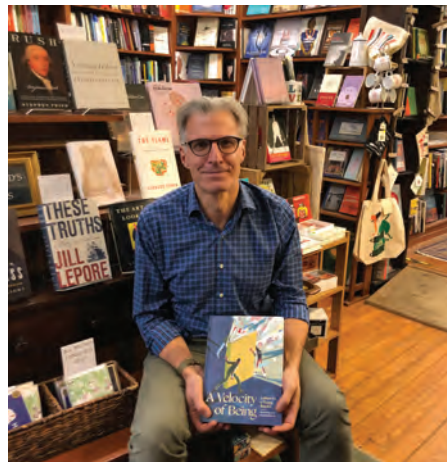
From the time he was a young kid, Richard has had his head buried in books. “I’ve always been a reader, and I’ve always loved books,” he says. “My mother was a profound influence on me because she was a real reader. I always marveled at the deep relationship she could form with fictional characters. I loved to talk to her about books. She cultivated and nurtured my literary sensibilities. Needless to say, she was thrilled when I decided to open an independent bookshop in 2004.”

Before that, Richard was involved, and still is, in less public interests and projects. He spent years in the auction business. “When I left, I knew I wanted to create something: A restaurant? An art gallery? A bookstore!” Like so many others, he lamented the absence of bookstores in our community.

“After much due diligence, I decided that market conditions were favorable. I concluded that the time to open an independent bookstore had never been more favorable. I must have had a faulty crystal ball! The ensuing years spawned an online behemoth committed to swallowing market share. Borders and other chain bookstores went bankrupt. The world economy collapsed and the consequent brick-and-mortar retail scene was forever changed. But we took a deep breath and moved forward.”

Richard understands the business is challenging: the demands many, the margins slim and the costs high. “You must really love books, and the community has to appreciate their value,” he notes. “Head House Books has a wonderful, loyal clientele. I consider it a vital participant in the cultural fabric of our community. What is painfully clear is that without a community wholly committed to supporting its local bookstore, it cannot survive.

To promote Head Houses Books’ relationship with SHCA, Richard created an online coupon code that provides the reader who finishes this article a one-time 35 percent discount on an order from his website [www.HeadHouseBooks.com](http://www.HeadHouseBooks.com) for



in-store pickup or local free delivery. “Orders must be received by April 10th and they will be quizzed rigorously about this article,” he jokes.

What Richard reads depends on his mood and his emotional state. “I usually have fiction and non-fiction stacked next to my bed and piled on my desk,” he relates. “I like social and behavioral economics, history and biographies. Fiction is obviously so much more visceral: it’s my real love.” Some of his early favorites were *Steppenwolf* by Hermann Hesse and Dostoyevsky’s *The Brothers Karamazov*. Richard is currently reading *The Travelers* by Regina Porter; *Robert Rauschenberg*, an oral history; and *The Odyssey*, translated by Emily Wilson.

Fortunately, his family shares Richard’s passion. “I have a great family,” he declares happily. “I am so very lucky and fortunate. I have five brothers, one of whom is my twin. We are very close and very different. Perhaps that’s why I am comfortable with multiple perspectives. My wife, Susan, and I have raised our three daughters here in Society Hill. They all went to St. Peter’s School and are very much a part of the neighborhood. Most importantly, they are all readers and know how to work a cash register and recommend a good read.”

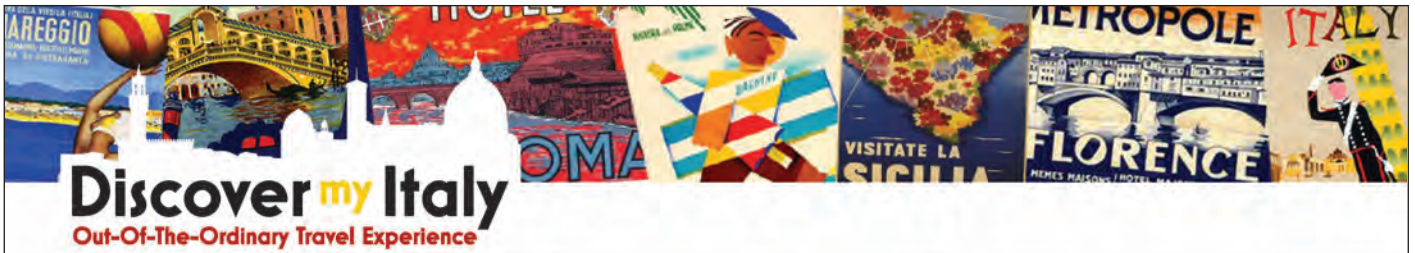
He believes children *need* to read and imagine. “And it is well accepted that reading as a child develops our capacity for empathy. Kobe Bryant, the Philadel-

phia basketball legend, recently talked about the fundamental importance of reading while explaining why he’s launched a publishing company: books represent an opportunity for kids to begin and end a finite process — to succeed while delaying gratification. Reading builds the capacity for commitment. Finishing a book, for many kids, is like scaling a mountain, and this sense of accomplishment positions kids for success.”

One of Richard’s favorite things is hearing children storm enthusiastically through the front door of his shop and race to the back, plop into a chair and start reading. Often, they ask to stay when their parents are ready to leave. “It all starts when parents encourage their kids to read at home.” He has recently launched a Book of the Month subscription, HHB to You, ensuring a new book every month for the hungry or reluctant reader, and quite a number of families have already subscribed. “Obviously, reading to your child provides bonding opportunities and contributes to language skills. Studies also show that reading feeds children’s brain development, enhances concentration and contributes to their overall health. It can reduce stress and ease anxiety.”

Richard is not exclusively a bookworm. “I enjoy creating art, particularly painting. I love playing with, or just walking, my dog. I eagerly await baseball season. I follow college basketball. I’ve always enjoyed skiing and hanging out in the ocean, riding my bike, spending time with my family. And perhaps above all else, I cherish my afternoon nap — in summer on a rope hammock with a book in my lap.” About Society Hill, he is an enthusiast. A former president of SHCA, he says: “I love the history, the architecture, the small streets. I love the palpable community, my friends, the intimacy that exists here within the larger city. Almost anything I need is a short walk away — particularly a great book!”

**Jane Biberman**, freelance writer and former editor of *Inside Magazine*, has contributed to a variety of publications.



LIMITED SPACE ON OUR EXCLUSIVE SMALL GROUP TOUR

# ANCIENT SICILY

September 6 to 15, 2019

Spectacular Beauty, Epochal History and Crossroad of Cultures



THE ULTIMATE INSIDER'S TRIP TO SICILY!  
 Experience the heart, soul and local splendor of this extraordinary place as only we can reveal.

**Giovanna Chiti**  
 Owner & Tour Specialist  
 Philadelphia and Milan Resident  
 Giovanna@DiscovermyItaly.com



Italy Planned with a **Native's Insights** and **Insider's Connections.**



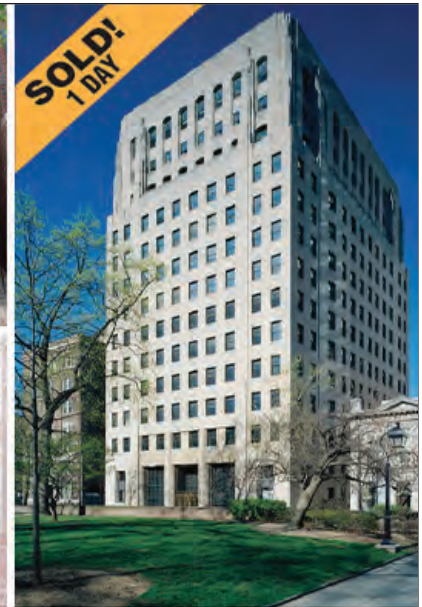
+1.215.586.3476

www.DiscovermyItaly.com

YOUR HOME **SOLD**  
**GUARANTEED**  
 OR WE'LL BUY IT!\*

Navigate real estate with a trusted and proven expert!

**FREE** HOME ANALYSIS  
 Find out how much homes in your area are selling for.



LARRY LEVIN, EXPERT REALTOR®  
 LLevin@LiveLovePhilly.com  
 www.LiveLovePhilly.com

CALL LARRY TODAY!  
**267-808-6565**



\*Larry Levin and Seller Must Agree on Price and Possession Date. Statistics based on Bright MLS data. This is not intended to solicit homes that are currently listed for sale with a Real Estate Broker.



**Giselle Sees An Allergist.**



**Tom Does Not.**

## Why Suffer Any Longer?

Allergists can make you feel well all the time. If your allergies and/or asthma are interfering with your ability to fulfill your activities of daily living or your medications are not helping and cause undesirable side effects, it is time to see the Board Certified Allergists at

**Allergy & Asthma Specialists<sup>SM</sup>**

**1-800-86COUGH**

[AllergyAndAsthmaWellness.com](http://AllergyAndAsthmaWellness.com)

Offices located in King of Prussia, Blue Bell, Collegeville, Center City Philadelphia, Jenkintown, Lansdale, Doylestown, Pottstown



Dr. Mark Posner (2017-2013), Dr. Eva Jakabovics (2017-2014)  
Dr. Robert Anolik (2017), Dr. Nora Lin (2017)

# THE LIPPINCOTT

227 S. 6th Street



Bright and sunny south-facing 2 bedroom, 2 bathroom with high ceilings, high-end finishes, custom millwork, a chef's kitchen open to the great room, marble appointed baths, and a luxurious master suite.  
**1,601 sf | \$1,195,000**

**We are pleased to announce that over the past two years, we have been responsible for selling more condominiums at The Lippincott than any other REALTOR.<sup>®</sup>**

**1SW 2NE 5NW**



## Allan Domb Real Estate

**PHILADELPHIA'S LARGEST SELLING CONDOMINIUM REALTOR<sup>®</sup>**

**WE COOPERATE WITH ALL REALTORS<sup>®</sup>**

1845 Walnut Street, Suite 2200, Philadelphia, PA 19103

Phone: 215.545.1500 [allandomb.com](http://allandomb.com) [domb@allandomb.com](mailto:domb@allandomb.com)